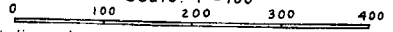


RIVER WOOD

A SUBDIVISION OF PART OF THE 5 1/2 SEC. 7, T5N, R2W,
DEWITT TWP, CLINTON CO., MICH.

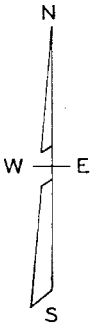
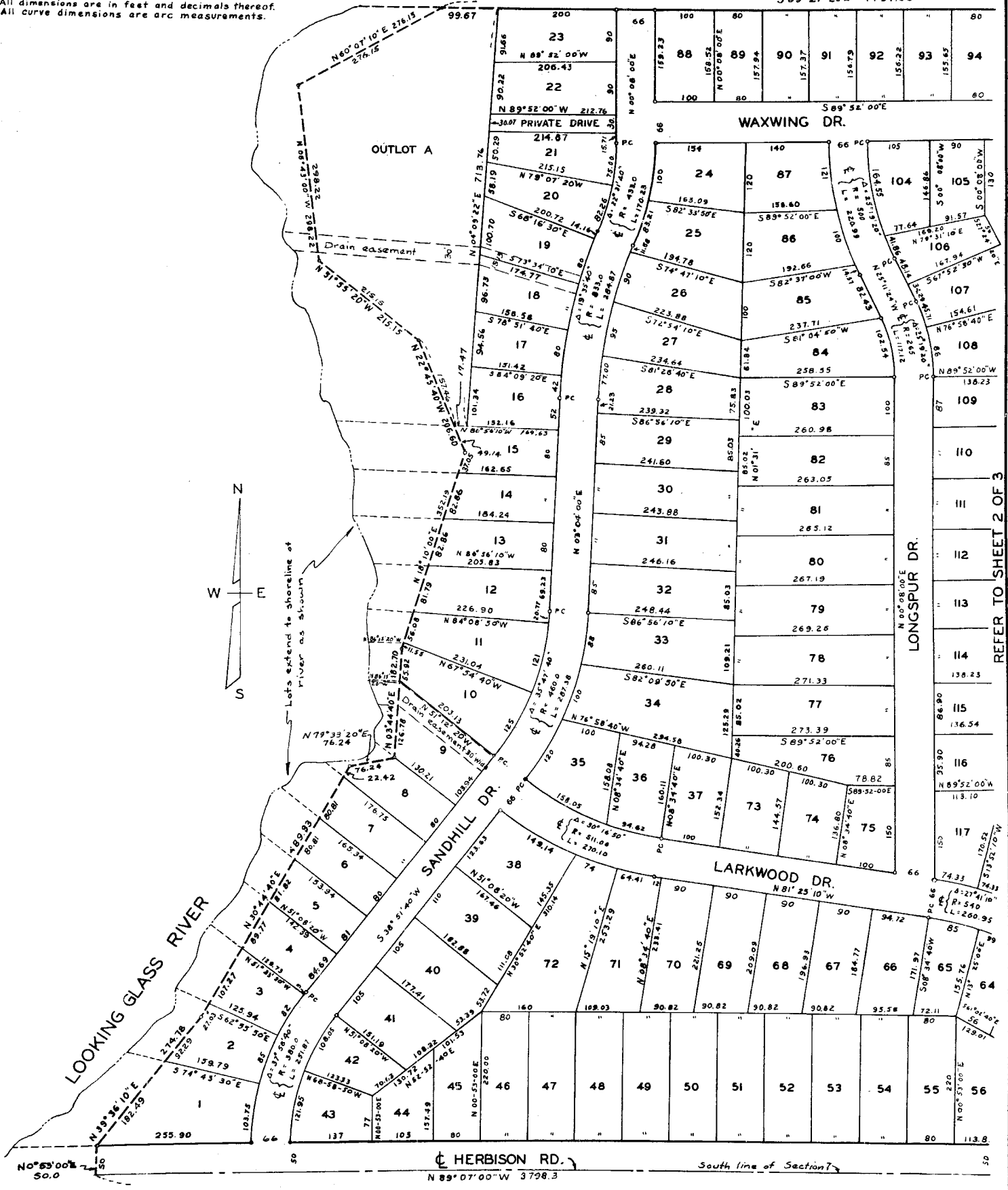
COPY
SHEET 1 OF 3

Scale: 1"=100'



All dimensions are in feet and decimals thereof.
All curve dimensions are arc measurements.

S 09-27-20 E 14 91.68



Lots extend to shoreline of
river as shown

REFER TO SHEET 2 OF 3

HERBISON RD.
N 89° 07' 00" W 3798.3

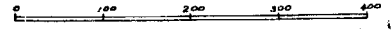
South line of Section 7

RIVER WOOD

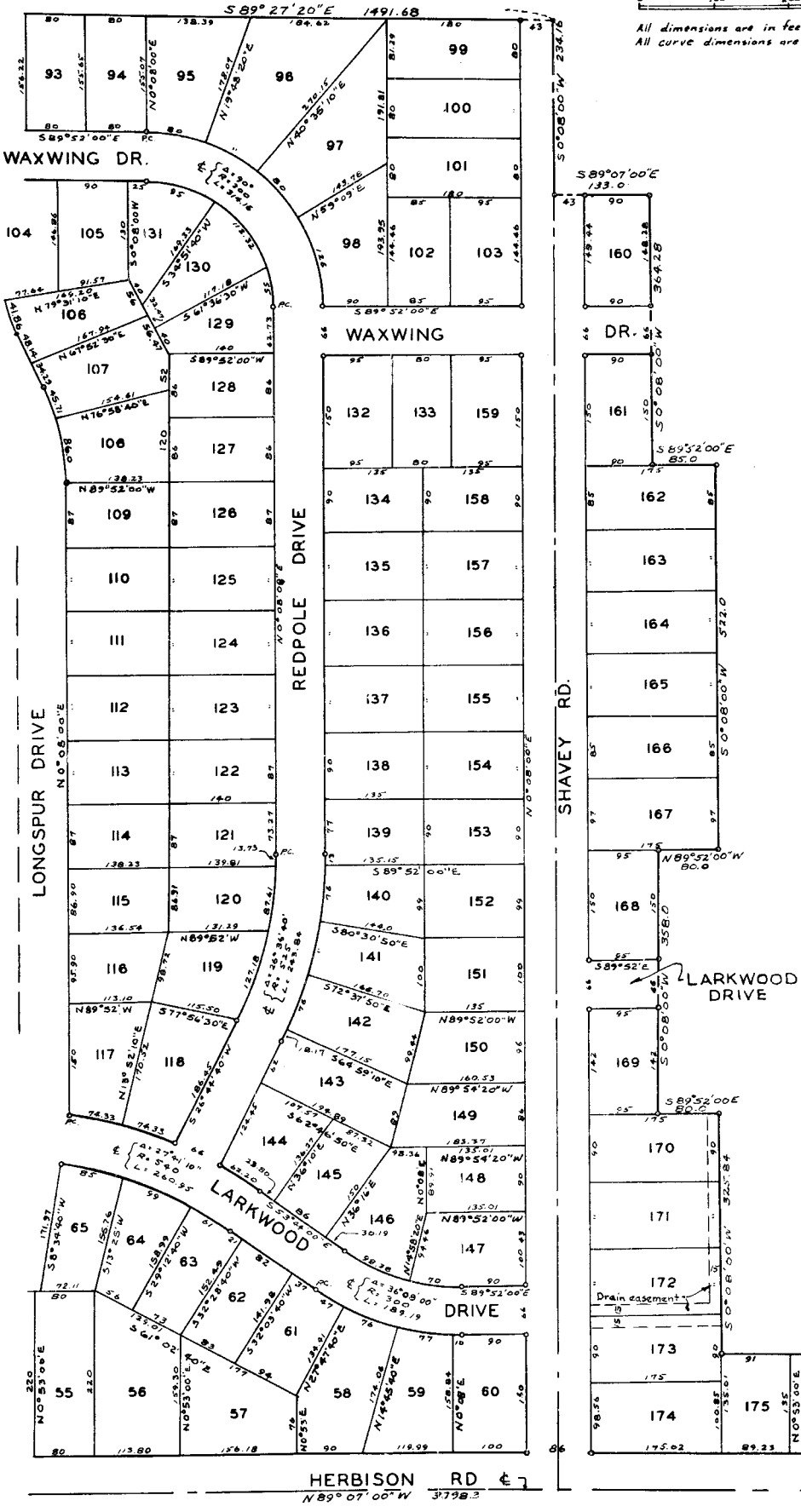
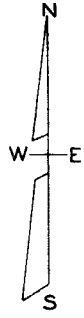
A SUBDIVISION ON PART OF THE S. 1/2 SEC. 7, T5N, R2W,
DEWITT TWP, CLINTON CO, MICHIGAN

COPY
SHEET 2 OF 3

Scale: 1"=100'



All dimensions are in feet and decimals thereof
All curve dimensions are arc measurements



REFER TO SHEET 1 OF 3

REFER TO SHEET 3 OF 3

RIVER WOOD

A SUBDIVISION ON PART OF THE S. 1/2 SEC. 7, T5N, R2W,
DEWITT TWP, CLINTON CO., MICHIGAN

COPY
SHEET 3 OF 3

DEDICATION

KNOW ALL MEN BY THESE PRESENTS, that we, Helen L. Kraas and Central Realty Company, a Michigan corporation, by Don L. Foote, President, and Harry C. Swan, Secretary, as vendors

as proprietors, have caused the land embraced in the annexed plat to be surveyed, laid out and platted, to be known as: RIVER WOOD, a subdivision of part of the South 1/2 of Sec. 7, T5N, R2W, Dewitt Township, Clinton County, Michigan

and that the streets drives and roads as shown on said plat are hereby dedicated to the use of the public, and the private drives as shown on said plat is dedicated to the use of the lot owners.

Signed and Sealed in the Presence of:
Joe Bohmet (Witness) Helen L. Kraas (I.S.)
Clyde K. Stephens (Witness) Central Realty Company

Don L. Foote (I.S.) President
Harry C. Swan (I.S.) Secretary

ACKNOWLEDGMENT

STATE OF MICHIGAN }
County of Ingham } ss.
On this 6th day of October, 1961, before me,
a Notary Public in and for said County, personally came the above named Helen L. Kraas
known to me to be the persons who executed the above dedication, and acknowledged the same to be their free act and deed.
Don L. Foote Notary Public, Ingham County, Mich.
My Commission expires September 10, 1965

ACKNOWLEDGMENT

STATE OF MICHIGAN }
County of Ingham } ss.
On this 6th day of October, A.D. 1961, before me Don L. Foote and Harry C. Swan, a Notary Public in and for said county appeared Don L. Foote and Harry C. Swan
to me personally known, who being each by me duly sworn did say that they are the President and Secretary respectively of the Central Realty Company a Michigan corporation, and that the seal affixed to said instrument is the corporate seal of said corporation and that said instrument was signed and sealed in behalf of said corporation by authority of its Board of Directors and the said Don L. Foote and Harry C. Swan acknowledged said instrument to be the free act and deed of said corporation.
Don L. Foote Notary Public, Ingham County, Mich.
My Commission expires September 10, 1965

APPROVAL BY BOARD OF COUNTY ROAD COMMISSIONERS

This plat has been examined and was approved on the 18th day of OCTOBER, 1961, by the Clinton County Board of Road Commissioners.

Paul Nobis (Member)
George Libby (Member)
Barnard Zeeb (Chairman)

PROCEEDING ATTORNEY'S CERTIFICATE
I HEREBY CERTIFY THAT I HAVE EXAMINED THE RECORDS OF TITLE TO THE LANDS DESCRIBED IN THE PROPOSED PLAT AND FIND NO OUTSTANDING INTERESTS, UNPAID TAXES, AND NO OTHER MATTERS AFFECTING THE TITLE TO THE SAME.

DESCRIPTION OF LAND PLATTED

The land embraced in the annexed plat of RIVER WOOD, a subdivision of part of the South 1/2 of Section 7, T5N, R2W, Dewitt Township, Clinton County, Michigan

is described as follows: Beginning at the S.E. corner of Section 7, T5N, R2W, Dewitt Township, Clinton County, Michigan, thence on the section line N89°07'00"W 3798.3 feet, thence N53°00'E 50.0 feet, thence N39°36'10"E 271.78 feet, thence N30°14'40"E 489.93 feet, thence N79°33'20"E 76.24 feet, thence N3°14'40"E 182.70 feet, thence N18°10'00"E 352.19 feet, thence N22°45'40"W 706.60 feet, thence N51°55'00"W 215.15 feet, thence N6°43'00"W 298.22 feet, thence N60°07'10"E 276.15 feet, thence S89°27'20"E 1197.68 feet, thence S0°08'00"W 231.16 feet, thence S89°07'00"E 133.0 feet, thence S0°08'00"W 361.28 feet, thence S89°52'00"E 85.4 feet, thence S0°08'00"W 522.0 feet, thence N89°52'00"W 80.0 feet, thence S0°08'00"W 358.0 feet, thence S89°52'00"E 80.0 feet, thence S0°08'00"W 325.84 feet, thence S89°07'00"E 1159.0 feet, thence S0°53'00"W 40.0 feet, thence S89°07'00"E 112.0 feet, thence N0°53'00"E 95.0 feet, thence S89°07'00"E 66.0 feet, thence N0°53'00"E 95.0 feet, thence S89°07'00"E 148.27 feet, thence S0°12'14.50"E to the point of beginning, containing Lots 1 to 189, inclusive, and Outlot A.

APPROVAL BY COUNTY PLAT BOARD

This plat was approved on the 17th day of October, 1961, by the Clinton County Plat Board.
Marie Beaufore (County Register of Deeds)
Paul Wakefield (County Clerk)
Velma Beaufore (County Treasurer)
Dale Chapman (County Drain Commissioner)

SURVEYOR'S CERTIFICATE

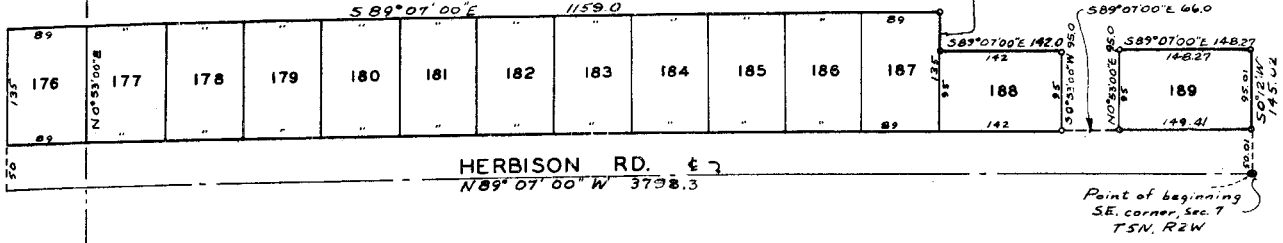
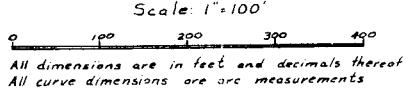
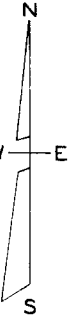
I hereby certify that the plat hereon delineated is a correct one and that permanent metal monuments consisting of bars not less than one-half inch in diameter and 36 inches in length, or shorter bars of not less than one-half inch in diameter tapped over each other at least 6 inches with an over-all length of not less than 36 inches, encased in a concrete cylinder of least 4 inches in diameter and 36 inches in depth have been placed at points marked thus (O) as thereon shown on all angles in the boundaries of the land platted, of all the intersections of streets, intersections of alleys, or of streets and alleys, and of the intersections of streets and alleys with the boundaries of the plat as shown on said plat.
Clyde T. Stephens Registered Land Surveyor/Professional Engineer

CERTIFICATE OF MUNICIPAL APPROVAL

This plat was approved by the Dewitt Township Board at a meeting held APRIL 5, 1961 and that the width of lots is in compliance with requirements of Section 30, Act 172, of 1929, as amended.
Warden Kyes Clerk

COUNTY TREASURER'S CERTIFICATE

Office of County Treasurer, Clinton County.
I hereby certify, that there are no tax liens or titles held by the State on the lands described herein, and that there are no tax liens or titles held by individuals on said lands, for the five years preceding the 31st day of March, 1961, and that the taxes for said period of five years are all paid, as shown by the records of this office.
This certificate does not apply to taxes, if any, now in process of collection by township, city or village collecting officers.
Velma Beaufore (County Treasurer)



REFER TO SHEET 2 OF 3