

# GENEVA SHORES NO 1

A SUBDIVISION ON PART OF THE SW 1/4 OF SECTION 8, T5N, R2W,  
DEWITT TOWNSHIP, CLINTON COUNTY, MICHIGAN

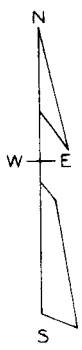
Scale 1"=100'



All dimensions are in feet and decimals thereof  
All curve dimensions are arc measurements

Note: The sidelines of Lots 83 thru 112 extend to the 828 contour on a projection of the sidelines as shown.

Reference Datum USC&GS



GENEVA SHORES

LAUCERNE DRIVE

SOUTH

GENEVA DRIVE

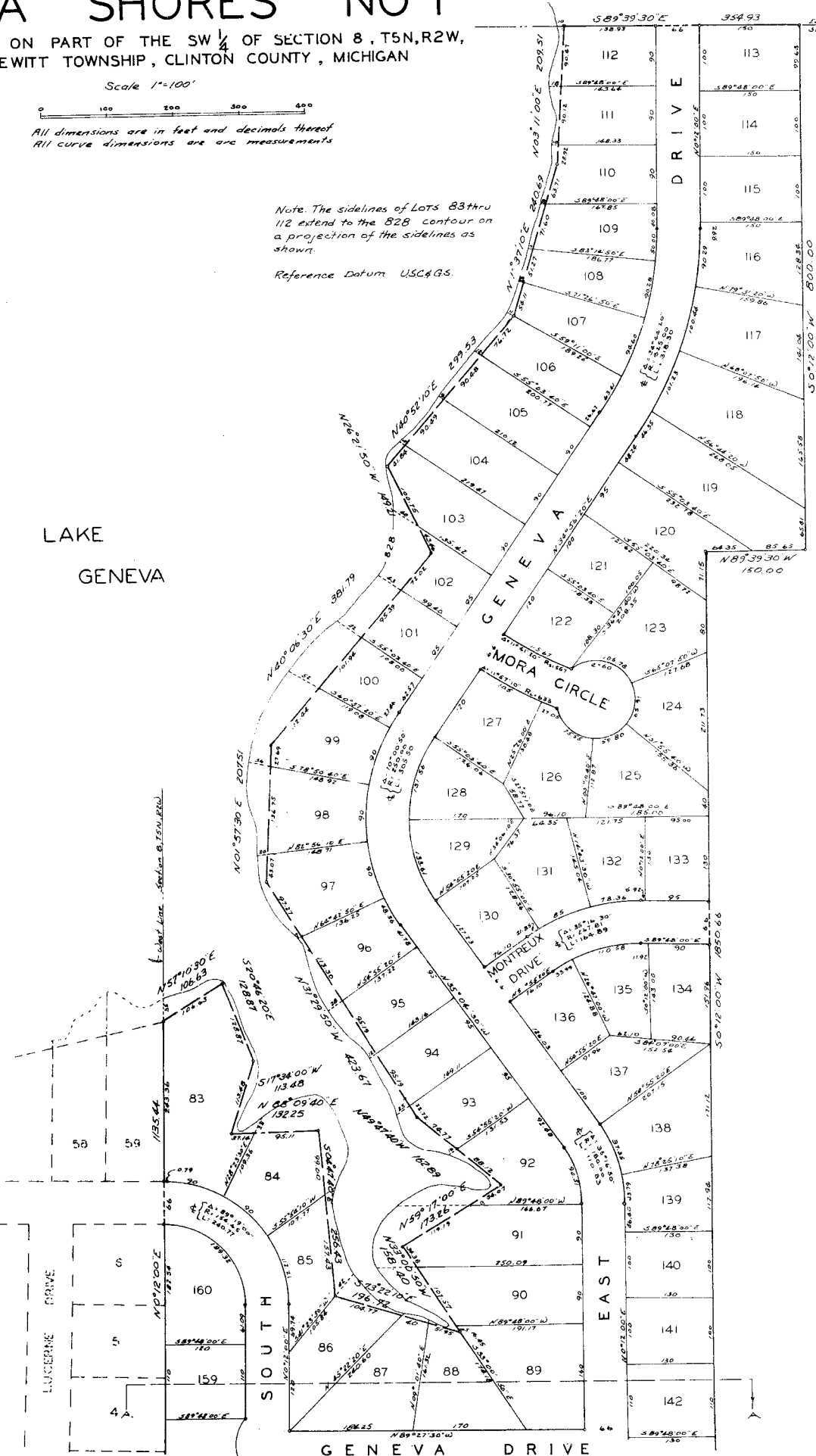
MORA CIRCLE

MONTPELIX DRIVE

EAST

GENEVA DRIVE

DRIVE

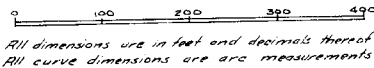


COPY

# GENEVA SHORES NO. 1

A SUBDIVISION ON PART OF THE SW 1/4 OF SECTION 8, T5N. R2W,  
DEWITT TOWNSHIP, CLINTON COUNTY, MICHIGAN

Scale 1" = 100'



### DEDICATION

KNOW ALL MEN BY THESE PRESENTS, that we, VICTOR F. BRYA and Ruby Brya, his wife and Lake Geneva Land Company, a Michigan corporation by Don L. Foote, President and Howard J. Bohnet, Secretary

as proprietors, have caused the land embraced in the annexed plat to be surveyed, laid out and platted, to be known as GENEVA SHORES NO. 1, a subdivision on part of the SW 1/4 of Section 8, T5N, R2W, Dewitt Township, Clinton County, Michigan

and that the streets, drives and circles as shown on said plat are hereby dedicated to the use of public

Signed and Sealed in the Presence of  
*Clyde K. Stephens* (Witness)  
*Eunice L. Stephens* (Witness)  
*Victor F. Brya* (L.S.)  
*Ruby Brya* (L.S.)  
*Don L. Foote* (President)  
*Howard J. Bohnet* (Secretary)

### DESCRIPTION OF LAND PLATTED

The land embraced in the annexed plat of GENEVA SHORES NO. 1, a subdivision on part of the SW 1/4 of Section 8, T5N, R2W, Dewitt Township, Clinton County, Michigan is described as follows: Beginning at the Southwest corner of Section 8, T5N, R2W, Dewitt Township, Clinton County, Michigan running thence N0°12'00"W 1135.14 feet on the West line of said Section 8, said line being the East line of Geneva Shores and River Wood Subdivisions, thence N57°10'30"E 106.63 feet, thence S20°46'20"E 128.87 feet, thence S17°34'00"W 113.48 feet, thence N88°09'40"E 132.25 feet, thence S4°47'10"E 256.43 feet, thence S73°22'10"E 196.72 feet, thence N33°00'15"W 158.40 feet, thence N59°17'00"W 173.26 feet, thence N10°47'10"W 162.89 feet, thence N31°29'50"W 123.51 feet, thence N01°57'30"E 207.51 feet, thence N10°06'30"E 351.79 feet, thence N26°21'50"W 119.21 feet, thence N10°52'10"E 299.53 feet, thence N16°37'10"E 210.69 feet, thence N03°11'00"E 209.51 feet, to the East-West 1/2 line of said Section 8, thence S89°39'30"E 354.93 feet on said 1/2 line, thence S0°12'00"W 800.00 feet, thence N89°39'30"W 150.00 feet, thence S0°12'00"W 1850.66 feet on the East line of the West 50 acres of the Southwest 1/4 of Section 8, thence N69°27'30"W 823.00 feet on the South line of said Section 8 to the point of beginning. Containing Lots 83 thru 160.

SHEET 2 OF 2

### APPROVAL BY BOARD OF COUNTY ROAD COMMISSIONERS

This plat has been examined and was approved on the 19th day of July, 1963, by the Clinton County Board of Road Commissioners.

*George Libbey* (Chairman)  
*Paul Wakefield* (Member)  
*Velma Beaufore* (Member)

### APPROVAL BY COUNTY PLAT BOARD

This plat was approved on the 19th day of July, 1963, by the Clinton County Plat Board.

*Markle Balkmap* (County Register of Deeds)  
*Paul Wakefield* (County Clerk)  
*Velma Beaufore* (County Treasurer)  
*Dale Chapman* (County Drain Commissioner)

### ACKNOWLEDGMENT

STATE OF MICHIGAN }  
County of ... Ingham }  
On this 19th day of June, 1963, before me, a Notary Public in and for said County, personally came the above named Victor F. Brya and Ruby Brya, his wife, known to me to be the persons who executed the above dedication, and acknowledged the same to be their free act and deed.  
Eunice L. Stephens, Notary Public, My Commission expires October 19, 1966

### CERTIFICATE OF MUNICIPAL APPROVAL

This plat was approved by the Township Board of Dewitt at a meeting held June 11, 1963, and is in compliance with Section 19A, and that the width of lots conform with the requirements of Section 30, Act 172, of 1929, as amended.

*Warden Kyes* (Clerk)

### SURVEYOR'S CERTIFICATE

I hereby certify that the plat hereon delineated is a correct one and that permanent metal monuments consisting of bars not less than one half inch in diameter and 36 inches in length, or shorter bars of not less than one-half inch in diameter lapped over each other of least 6 inches with an over all length of not less than 36 inches, enclosed in a concrete cylinder at least 4 inches in diameter and 36 inches in depth have been placed at points marked thus (O) as thereon shown at all angles in the boundaries of the land platted, at all the intersections of streets, intersections of alleys, or of streets and alleys, and at the intersections of streets and alleys with the boundaries of the plat as shown on said plat

*Clyde K. Stephens* (Registered Land Surveyor Professional Engineer)

### COUNTY TREASURER'S CERTIFICATE

Office of County Treasurer, Clinton County.  
I hereby certify, that there are no tax liens or titles held by the State on the lands described hereon, and that there are no tax liens or titles held by individuals on said lands, for the five years preceding the 19th day of July, 1963, and that the taxes for said period of five years are all paid, as shown by the records of this office.  
This certificate does not apply to taxes, if any, now in process of collection by township, city or village collecting officers.

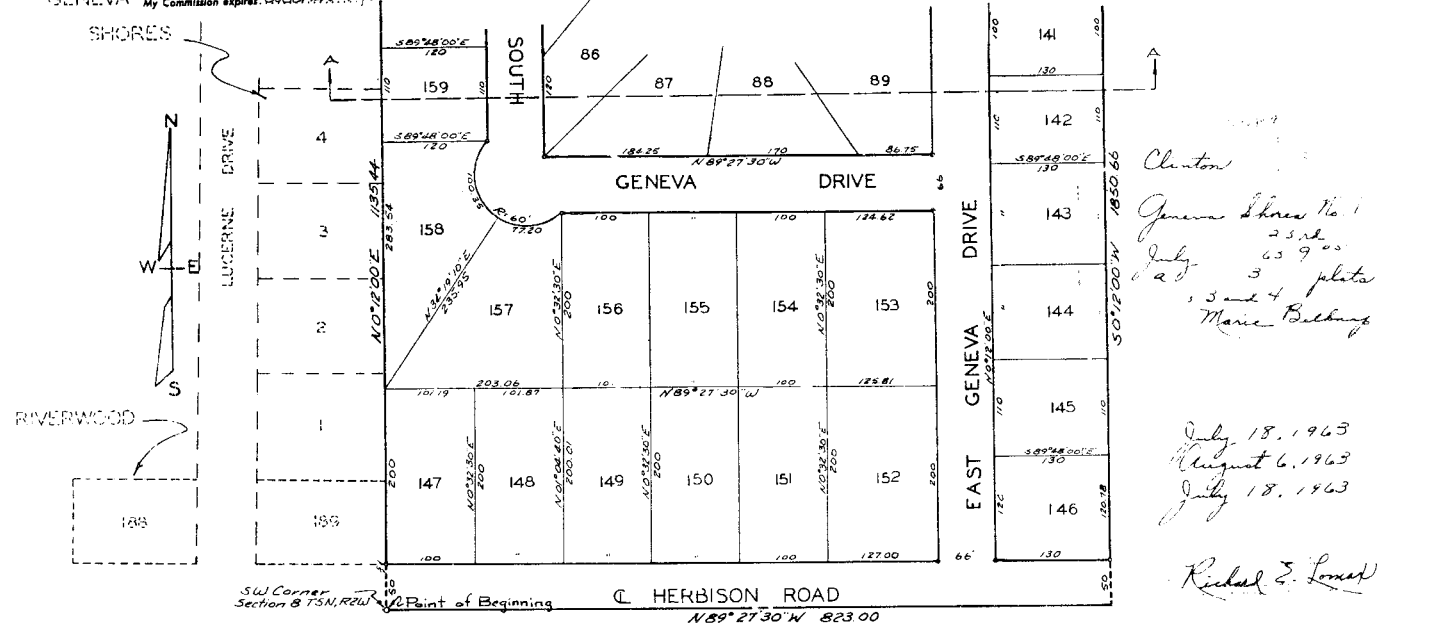
*Velma Beaufore* (County Treasurer)

### ACKNOWLEDGMENT

STATE OF MICHIGAN }  
County of ... Ingham }  
On this 19th day of June, A.D. 1963, before me, Eunice L. Stephens, a Notary Public in and for said county appeared Don L. Foote and Howard J. Bohnet, to me personally known, who being each by me duly sworn did say that they are the President and Secretary respectively of the Lake Geneva Land Company, a Michigan corporation, and that the seal affixed to said instrument is the corporate seal of said corporation and that said instrument was signed and sealed in behalf of said corporation by authority of its Board of Directors and the said Don L. Foote and Howard J. Bohnet, acknowledged said instrument to be their free act and deed of said corporation.  
Eunice L. Stephens, Notary Public, My Commission expires October 19, 1966

PROSECUTING ATTORNEY'S CERTIFICATE  
I HEREBY CERTIFY THAT I HAVE EXAMINED THE ASSUMED OF TITLE TO THE LANDS DESCRIBED IN THE FOREGOING PLAT, AND FIND NO OUTSTANDING INTERESTS, INCUMBRANCES, EASEMENTS, RIGHTS, OTHER THAN THE PATENT JOINTORS IN THE DEDICATION HEREOF.

*Paul M. Lewis* (Prosecuting Attorney)  
DATE July 11, 1963



Clinton  
Geneva Shores No. 1  
23 lots  
July 23, 1963  
3 and 4 plats  
Marie Balkmap

July 18, 1963  
August 6, 1963  
July 18, 1963

*Ronald E. Lomet*