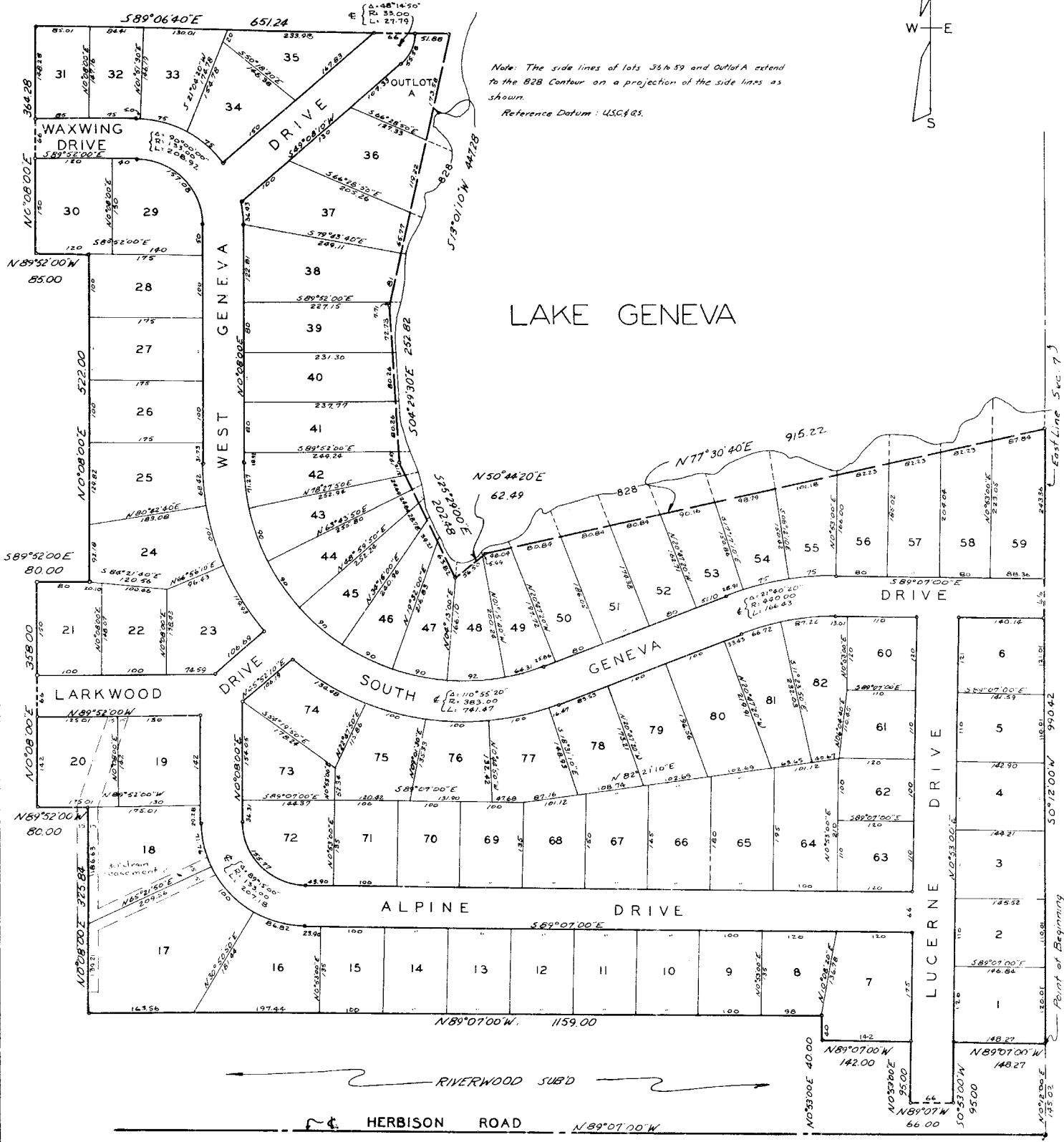
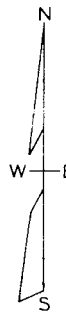


# GENEVA SHORES

A SUBDIVISION ON PART OF THE SOUTH 1/2 OF SECTION 7, T5N, R2W,  
DEWITT TOWNSHIP, CLINTON COUNTY, MICHIGAN

SHEET 1 OF 2

Scale 1" = 100'  
All dimensions are in feet and decimals thereof  
All curve dimension are arc measurements



Note: The side lines of lots 36 & 39 and Outlot A extend to the B2B Contour on a projection of the side lines as shown.  
Reference Datum: USC&GS.

LAKE GENEVA

Point of Beginning  
50°12'00" W 990.42'

SE Corner Section 7  
T5N R2W

# GENEVA SHORES

COPY

A SUBDIVISION ON PART OF THE SOUTH 1/2 OF SECTION 7, T5N, R2W,  
DEWITT TOWNSHIP, CLINTON COUNTY, MICHIGAN

SHEET 2 OF 2

### APPROVAL BY COUNTY PLAT BOARD

This plat was approved on the 18th day of May 1962 by the  
Clinton County Plat Board

Marie Ballmap (County Register of Deeds)  
Paul Wakefield (County Clerk)  
Valma Beaufore (County Treasurer)  
Dale Chapman (County Drain Commissioner)

### APPROVAL BY BOARD OF COUNTY ROAD COMMISSIONERS

This plat has been examined and was approved on the 18th day of May 1962 by the Clinton County Board of Road Commissioners.

Bernard Zeeb (Chairman)  
Paul Hobbs (Member)  
George Libby (Member)

### CERTIFICATE OF MUNICIPAL APPROVAL

This plat was approved by the Township Board of the Township of DeWitt that the plat is in compliance with Sec. 19A and that the width of lots is in compliance with requirements of Section 30, Act 172, of 1929, as amended.

Warden Kyes Clerk

### COUNTY TREASURER'S CERTIFICATE

Office of County Treasurer, Clinton County. I hereby certify, that there are no tax liens or titles held by the State on the lands described hereon, and that there are no tax liens or titles held by individuals on said lands, for the five years preceding the 25th day of September 1961, and that the taxes for said period of five years are all paid, as shown by the records of this office.

This certificate does not apply to taxes, if any, now in process of collection by township, city or village collecting officers.  
Valma Beaufore (County Treasurer)

### SURVEYOR'S CERTIFICATE

I hereby certify that the plat hereon delineated is a correct one and that permanent metal monuments consisting of bars not less than one-half inch in diameter and 36 inches in length, or shorter bars of not less than one-half inch in diameter lapped over each other at least 6 inches with an over-all length of not less than 36 inches, encased in a concrete cylinder at least 4 inches in diameter and 36 inches in depth have been placed at points marked thus (O) as thereon shown at all angles in the boundaries of the land platted, at all the intersections of streets, intersections of alleys, or of streets and alleys, and at the intersections of streets and alleys with the boundaries of the plat as shown on said plat.

Clyde K. Stephens Registered Land Surveyor & Professional Engineer

### PROSECUTING ATTORNEY'S CERTIFICATE

I HEREBY CERTIFY THAT I HAVE EXAMINED THE ABSTRACT OF TITLE TO THE LANDS DESCRIBED IN THIS PROPOSAL PLAT AND FIND NO OUTSTANDING INTERESTS, INCLUDING MINERAL RIGHTS, OTHER THAN THE PARTIES JOINING IN THE DEDICATION HEREIN.

Richard E. Lomax PROSECUTING ATTORNEY  
CLINTON COUNTY, MICHIGAN  
DATED May 25, 1962

May 25, 1962  
June 1, 1962  
May 25, 1962  
Richard E. Lomax

Clara...  
was recorded this 28th day of May, 1962.  
A. M. Libby, Jr.  
37  
Marie Ballmap  
Register of Deeds

### DEDICATION

KNOW ALL MEN BY THESE PRESENTS, that we, Helen L. Kraas and Central Realty Company, a Michigan corporation by Don L. Foote, President, and Harry C. Swan, Secretary, as vendors, as proprietors, have caused the land embraced in the annexed plat to be surveyed, laid out and platted, to be known as GENEVA SHORES, a subdivision of part of the South 1/2 of Section 7, T5N, R2W, DeWitt Township, Clinton County, Michigan.

and that the streets, drives as shown on said plat are hereby dedicated to the use of the public.

Signed and Sealed in the Presence of:  
Helen L. Kraas (Witness)  
Clyde K. Stephens (Witness) Central Realty Company  
Don L. Foote (P.S.) President  
Harry C. Swan (P.S.) Secretary

### ACKNOWLEDGMENT

STATE OF MICHIGAN }  
County of Ingham }  
On this 6th day of October 1961, before me, a Notary Public in and for said County, personally came the above named Helen L. Kraas known to me to be the persons who executed the above dedication, and acknowledged the same to be their free act and deed.  
Beulah M. Walker Notary Public, Ingham County  
My Commission expires September 10, 1965

### ACKNOWLEDGMENT

STATE OF MICHIGAN }  
County of Ingham }  
On this 6th day of October A.D. 1961, before me, Beulah M. Walker, Notary Public in and for said county appeared Don L. Foote and Harry C. Swan to me personally known, who being each by me duly sworn did say that they are the President and Secretary respectively of the Central Realty Company, a Michigan corporation, and that the seal affixed to said instrument is the corporate seal of said corporation and that said instrument was signed and sealed in behalf of said corporation by authority of its Board of Directors and the said Don L. Foote and Harry C. Swan acknowledged said instrument to be the free act and deed of said corporation.  
Beulah M. Walker Notary Public, Ingham County  
My Commission expires September 10, 1965

### DESCRIPTION OF LAND PLATTED

The land embraced in the annexed plat of GENEVA SHORES, a subdivision of part of the South 1/2 of Section 7, T5N, R2W, DeWitt Township, Clinton County, Michigan.

is described as follows: Beginning at a point N0°12'00"E 145.02 feet from the S.E. Corner Section 7 T5N, R2W, DeWitt Township, Clinton County, Michigan, thence N89°07'00"W 148.47 feet, thence S0°53'00"W 95.00 feet, thence N89°07'00"W 66.00 feet, thence N0°53'00"E 95.00 feet, thence N89°07'00"W 142.00 feet, thence N0°53'00"E 40.00 feet, thence N89°07'00"W 1159.00 feet, thence N0°08'00"E 325.84 feet, thence N89°52'00"W 80.00 feet, thence N0°08'00"E 358.80 feet, thence S89°52'00"E 80.00 feet, thence N0°08'00"E 522.00 feet, thence N89°52'00"E 85.00 feet, thence N0°08'00"E 364.28 feet, thence S89°52'00"E 651.24 feet, thence S13°01'10"W 447.26 feet, thence S02°29'30"E 252.82 feet, thence S25°29'00"E 202.48 feet, thence N50°44'20"E 62.49 feet, thence N77°30'40"E 915.22 feet thence S0°12'00"W 990.42 feet on the East Section Line of Section 7 T5N, R2W, DeWitt Township, Clinton County, Michigan to the point of beginning, containing lots 1 to 82, inclusive, and Outlot A.